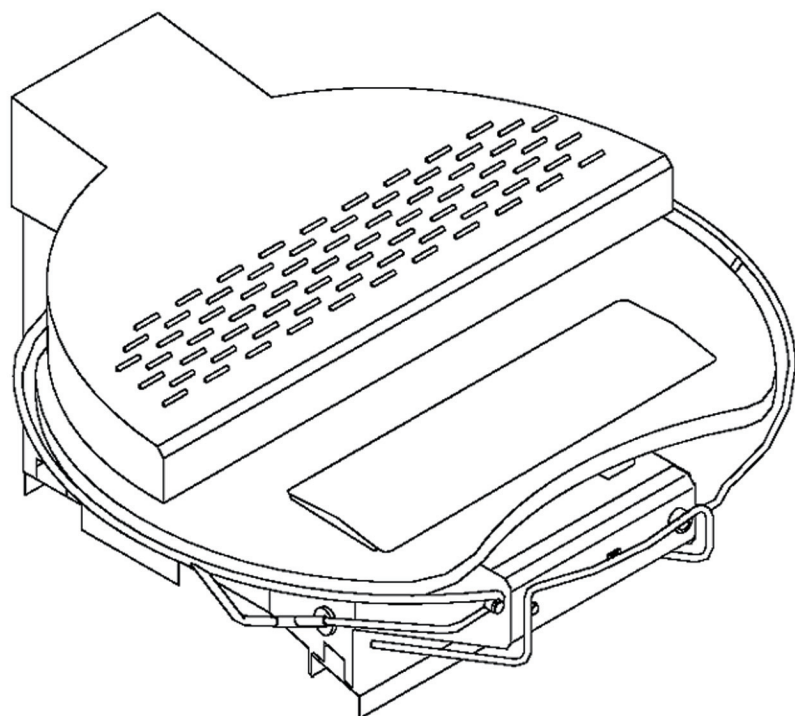


ROULETTE



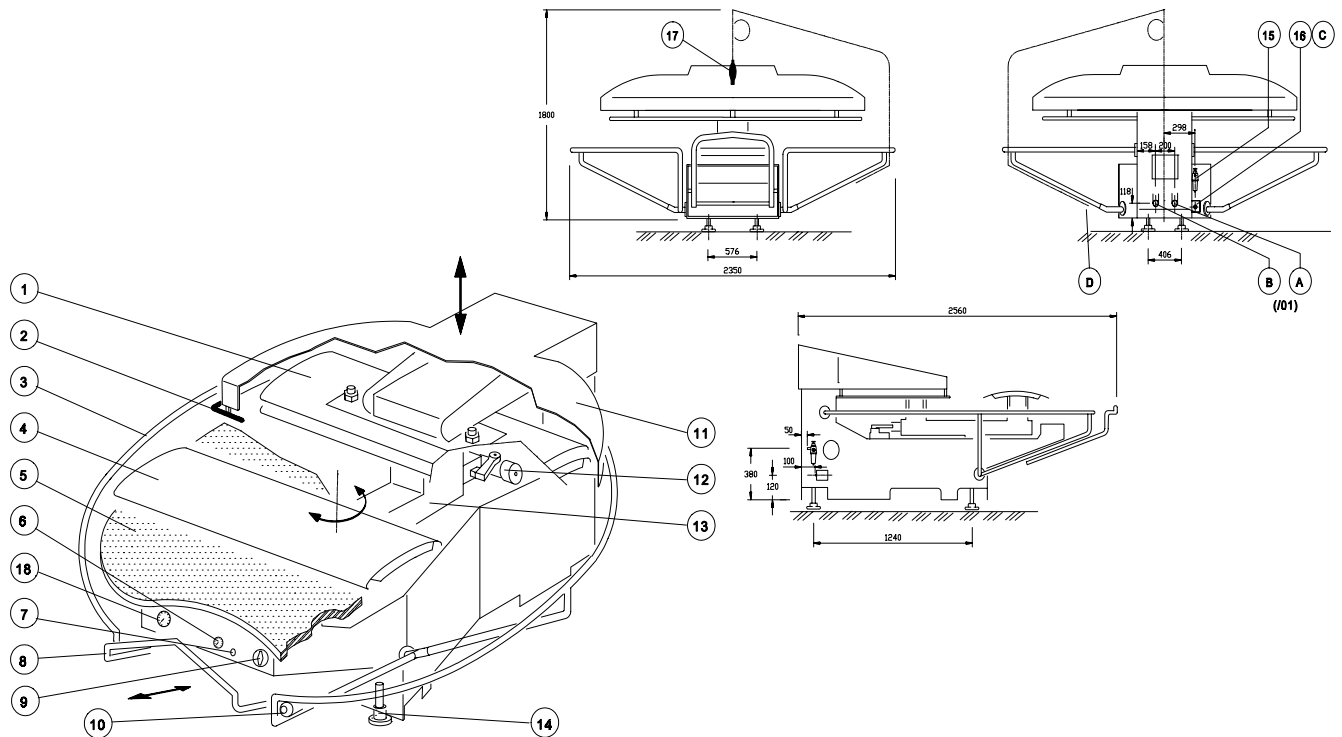
Pantex 2000 BV
Industrieweg 27
9672 AP Winschoten
The Netherlands
Tel.nr. : +031(0)597-458333
Fax.nr. : +031(0)597-412723
Website : www.pantex.nl
E-mail : info@pantex.nl

Type : **ROULETTE**
25XX/101
25XX/103

Serienr. : _____

rev.4/roul.eng

Machine survey, operating functions and connections



1. Upper pressing shoe (= head)
2. Safety bar
3. Safety frame
4. Lower pressing shoe (= buck)
5. Table
6. Timer pressing duration
7. Reset-switch
8. Lever
9. Main switch
10. Emergency stop switch
11. Protective cover
12. Oil-check
13. Rotatable arm
14. Bearer

15. Air control
16. Electric switch box
17. Spray gun
18. Temperature control (only for /103 - electrically heated)
- A. Steam supply 1/2" (only with /101 - steam heated)
- B. Steam return 1/2" (only with /101 - steam heated)
- C. Electrical connection
- D. Water supply 1/4"
15. Compressed air connection 1/4" BSP

Symbols

Warning symbols:



Attention!
Caution!
Follow the
instructions.



Caution, electricity
Can cause electrical
shocks.
Do not touch!

Caution, heat!
Do not touch!

Very important!
Safety aspect!

Table of contents

User instructions

1	Introduction	4
	- Important	
2	Technical data.....	4
3	Installation	5
	 Installation has to be executed by a registered installer!	
3.1	Transport.....	5
3.2	Assembly furnished accessories.....	5
3.2.1	<i>Assembly table</i>	5
3.2.2	<i>Assembly protective cover</i>	6
3.2.3	<i>Assembly safety frame</i>	6
3.3	Connections	6
3.3.1	<i>Steam (only /101)</i>	6
3.3.2	<i>Compressed air</i>	7
3.3.3	<i>Electricity</i>	7
3.3.4	<i>Spray gun</i>	8
4	How to operate	8
4.1	Operating functions	8
4.2	Put into operation	9
4.3	Use and operation	9
4.3.1	<i>User directions</i>	9
4.3.2	<i>Pressing instructions</i>	10
4.4	Put out of operation.....	10
5	Trouble shooting.....	11
6	Maintenance, repairs and adjustments	12
6.1	Maintenance.....	12
6.2	Repairs.....	12
	 Repairs have to be carried out by qualified servicemen!	
6.3	Adjustments	13
6.3.1	<i>Damping table</i>	13
6.3.2	<i>Depth stop</i>	13
6.4	Spare parts.....	14

Addition A: Machine survey spare parts

Addition B: Electrical circuit: 1 Steam heated, 2 Electrically heated

Addition C: Air circuit

User instructions

1 Introduction

The ROULETTE is a rotary laundry press designed for the pressing of moist garments. The ROULETTE is suitable for all kinds of fabric.

All the numbers and capitals indicated in brackets throughout this manual, refer to the numbers/capitals of the machine drawings (machine survey+spare parts).

Important:

- ! Read this manual before installing the machine and before taking it into use.
- ! All the installation, repair, adjustment and maintenance activities must be carried out by experts.



- ! The steam pressure should be 9 bar maximum and the compressed air pressure not higher than 6 bar. Higher pressures could bring along safety risks or lead to damage to the ROULETTE.
- ! Create a clean and spacious working environment.

Advice: Keep this manual somewhere near the press.

2 Technical data

Type: 25xx/101 (steam heated)

25xx/103 (electrically heated)

/101 (steam heated):

Maximum allowed steam pressure : 9 bar
Steam consumption : 35 kg/hour (with steam pressure of 9 bar)

Maximum allowed air pressure : 6 bar
Air consumption : 60 liter/min.

Voltage : /101 (steam) : 230/50/1
/103 (electrically): 230/50/3+N or 400/50/3+N
(consult serial number plate)

Power : /101 (steam) : 1,3 A (230 V)
/103 (electric) : 3x30,0 A (230 V)
3x17,2 A (400 V)

Electrical consumption : 0,3 KW 11,9 KW

Weight : 960 Kg

Dimensions : 2560 x 2350 x 1800 mm (L x W x H)

Sound level: A-weighted equivalent continuous sound pressure : < 70 dB

3 Installation

3.1 Transport

☞ **Mind your safety! Wear safety shoes and working gloves.**

- Leave the machine on the pallet for transport to its location.
- Avoid shakes.
- Use a lifting devices to transport the machine and to move into position.
- Check the stability
- Fix the press with 4 bearers (14).
- ! Create enough **working space** around the machine.

3.2 Assembly furnished accessories

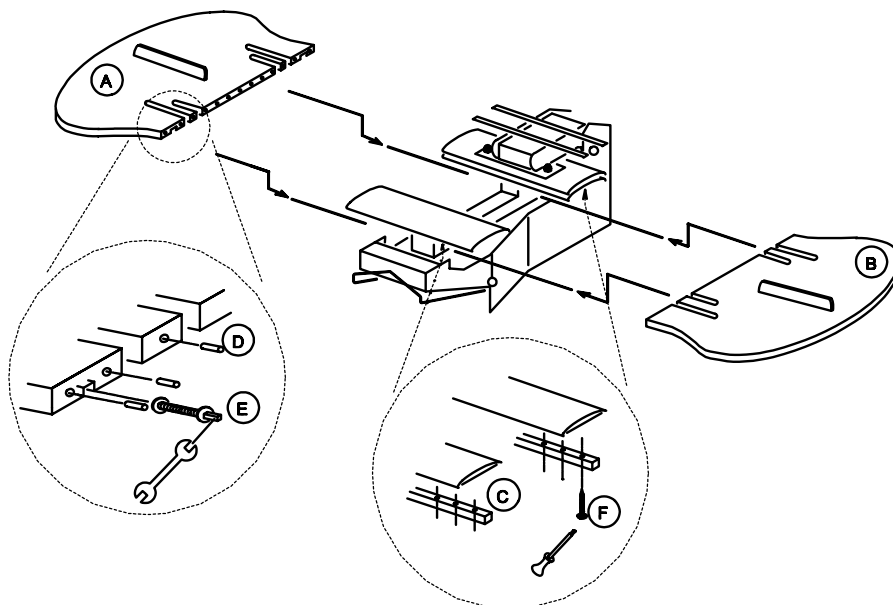


Illustration 1: assembly table

3.2.1 Assembly table

Instructions (according to illustration 1):

- Place both table halves (A) and (B) on top of the two beams (C) of the frame, directly under the upper pressing shoe (4);
- Put 12 locking pins (D) to one of the two table halves and join the two halves together;
- Slide two clamping screws (E) in the slots at the bottom side of the table and clamp the two halves by tightening the clamping screws;
- Assemble the table to the two beams (C) with the aid of 12 wood screws (F).

For the disassembly, the instructions above should be carried out in reverse order.

3.2.2 Assembly protective cover

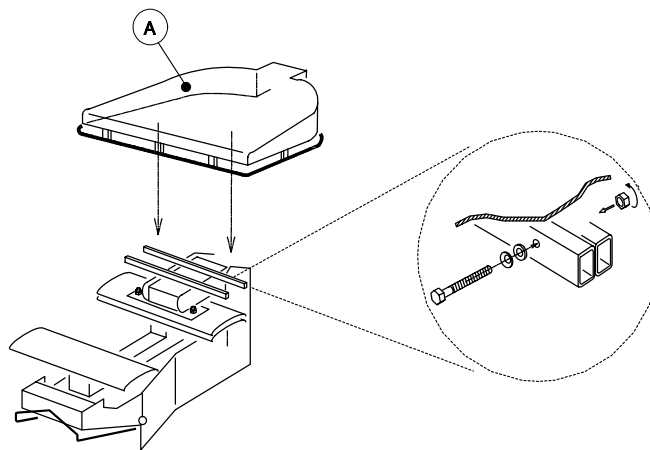


Illustration 2: assembly protective cover

Instructions:

- Place the protective cover on top of the two profiles of the frame;
- Assemble the protective cover according to illustration 2.
- Connect the electrical connection at the innerside of the cover (A) to the unlinked cord at the frame of the head.

3.2.3 Assembly safety frame

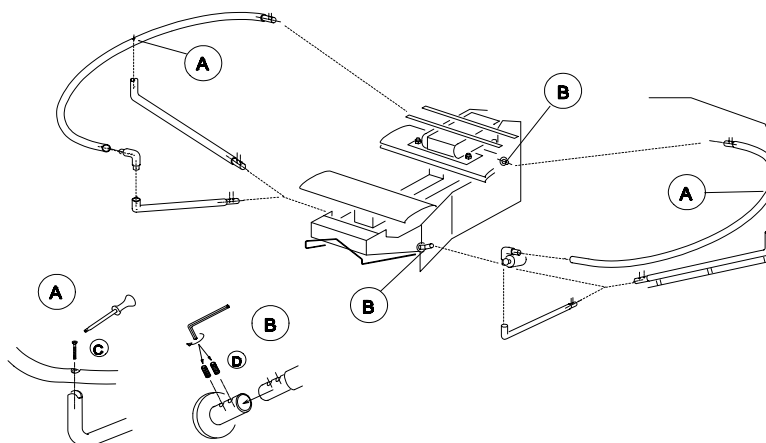


Illustration 3: assembly safety frame

Instructions:

- Assemble the parts of the safety frame to the frame with the fixing parts (C) and (D), according to illustration 3;
- The details (A) and (B) show the method of assembling.

3.3 Connections

Be sure that no dirt or other materials enter the steam and compressed air lines when making the connections for this might damage the machine.

3.3.1 Steam (only /101)

☞ **Wear working gloves!**

Instructions to connect steam lines:

- Connect the steam lines according to illustration 4.
- Avoid condensation to enter the machine: connect the branches of the steam lines in such way that they run at least 12" (about 300mm) upward first.

- Flush the connected steam lines with steam from the steam supply.
- A steam trap (X) with non-return valve (Z) on the lowest point of the supply to the return line is recommended to assure dry steam (dotted line in figure 1). Mark the marking 'entry' and 'exit' on the steam trap and non-return valve.
- Install the steam trap and non-return valve as close as possible to the connection of the machine.
- Advice: Install a shut off valve in both supply and return lines in order to be able to the machine off from the steam lines, for instance for repair activities.
- Connect the machine to the steam lines.

Connection: ½"

Maximum steam pressure: 9 bar

A : Steam supply to press

B : Steam return from press

W : Steam trap

X : Shut off valve

Y : Blow off cock

Z : Non-return valve

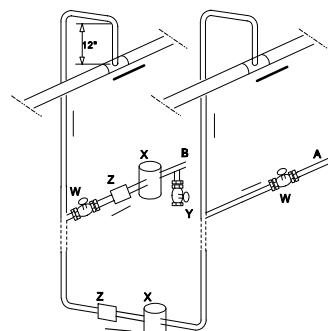


Illustration 4: connection steam lines

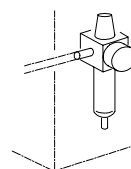


Illustration 5:
Air filter

3.3.2 Compressed air

- Avoid dirt to enter the compressed air line.
- Connect the 1/4" compressed air line to the air control (15), which has been set at 6 bar at the factory.

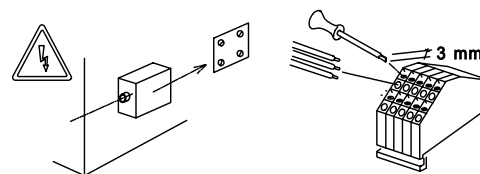
3.3.3 Electricity



☞ **Never touch wires or plugs with wet hands.**

Instructions to connect electricity:

- Remove the cover of the switch box;
- Connect the main power supply to the connecting block according to the illustrations 6 and 7.



☞ **Attention! The machine is only suitable for 1 kind of the voltage. The correct voltage is indicated on the serial number plate on the machine.**

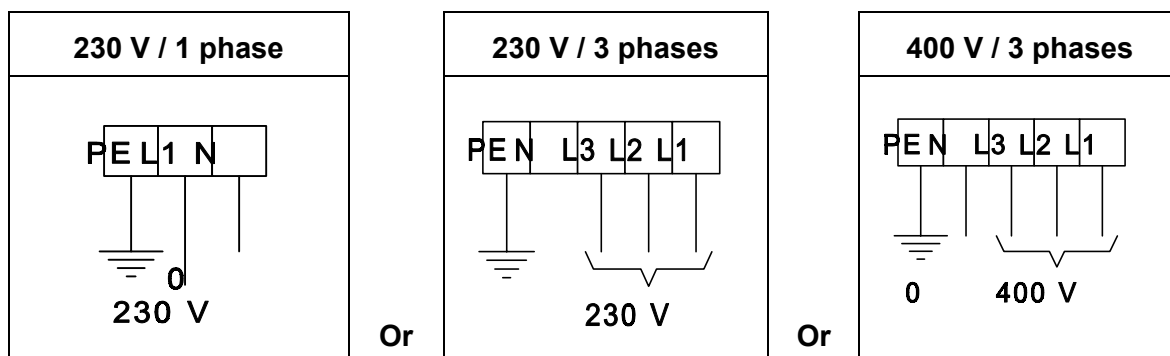


Illustration 7: electrical connection

- Assemble the cover to the switch box'
- Check if the main switch (9) is turned 'OFF';
- Plug in.

3.3.4 Spray gun

- Connect the end of the water hose to the water supply as indicated by illustration 8.

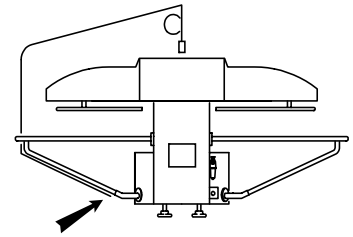
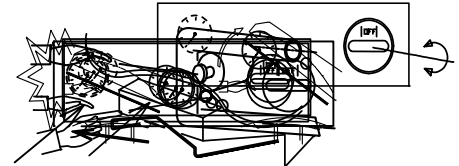


Illustration 8: water supply

4 How to operate

4.1 Operating functions

- **Main switch (9)**
To switch the electrical circuit on and off.
- **Lever (8)**
By pulling the lever (8), the automatic press- cycle will start. As soon as the pressing starts, the lever will slide back into starting position so another garment can be laid on the other buck.
- **Emergency stop switch (10)**
By operating the emergency stop switch (10) the machine will turn dead and pressureless. The machine can be put into operation again by unbolting the emergency stop switch (turn it clockwise) and pressing the reset-switch (7).
- **Reset-switch (7)**
By pressing the reset-switch, the machine is put back into operation (the table (5) should be in the starting position: the buck straight under the head).
- **Timer pressing duration (6)**
With this timer you can set the desired pressing duration (0 - 25 seconds).
- **Safety bar (2)**
If the safety bar is touched while the press is closing, the upper pressing shoe will move back up immediately. The machine has to be switched on again by operating the reset-switch (7).
- **Spray gun (17)**
The garment that needs pressing should be damp. If the garment is not wet enough, it can be humidified with the spray gun.
- **Temperature control (18) (only /103)**
To adjust the temperature.



4.2 Put into operation

☞ **Mind your own and other people's safety!**

Create a clean, surveyable and spacious working environment.

Make sure that nobody is standing behind the machine.

☞ **Check the following points daily!**

- /101 (steam): Check the steam pressure (maximum of 9 bar) and open the steam shut off valve completely.
- Connect the air line on the air control (15) and check the compressed air pressure (maximum of 6 bar).
- Open the water supply for the spray gun (17).
- Make sure that the buck (4) is directly under the head (1) as starting position.
- Switch the main switch (9) 'ON'.
- Check the working of the pressing cycle:
 - Set timer (6) on its maximum (± 25 seconds);
 - Pull the lever (8) = start of the cycle;
 - Table (5) will rotate;
 - When one of the under pressing shoes (4) gets under the upper pressing shoe (1), the press will close (25 seconds) and the lever will slide back.
 - At the end of the pressing duration, the head (1) will come back up;
- Check the working of the emergency stop switch (10):
 - Pull the lever (8) = start of the cycle;
 - Press the emergency switch (10) after the press has close;
 - The head (1) will come back up immediately, the machine will turn dead and pressureless;
 - To be able to start the machine again, the emergency stop switch (10) has to be turned to the right and the reset-switch has to be pressed.
- Check the working of the safety bar (2):
 - Pull the lever (8) = start of the cycle;
 - Touch the safety bar (2) with your hand during or after closing of the head (1);
 - The upper pressing shoe (1) will move back up immediately and the machine will turn dead;
 - Operate the reset-switch to turn back on the machine.
- Consult chapter 5 'Trouble shooting' in case the machine is malfunctioning.
- Call for an expert in case of leakages or defects.
- /103 (electrically heated): the desired temperature needs to be set.
- Let the machine warm up for about 30 minutes.
- Ready for use.

4.3 Use and operation

4.3.1 User directions

- ! Use the ROULETTE only for the pressing of clothes and garments.
- ! The steam pressure and compressed air pressure are not allowed to be higher than 9 bar and 6 bar respectively. A higher pressure might cause damage to the machine.
- ! Do not use the table (5) for storage of materials and objects and do not lean or sit on it.
- ! All repair activities are to be executed by a qualified serviceman (see chapter 6).

☞ **Not following the instructions of this manual might lead to injury or to damage to the machine.**

☞ **Caution: The underside of the bucks (4) and the steam connections at the rear are**



4.3.2 *Pressing instructions*

☞ **Mind your own and other people's safety!**

Do not hesitate to use the emergency stop switch (10) in emergencies. The machine will turn dead immediately. The press can be turned on again by turning the switch clockwise and by pressing the reset-switch (7).

! The garment that needs pressing has to be moist. Use the spray gun (17) to humidify if necessary.

Instructions:

- Set the desired pressing duration (6).
- Lay the garment on the front buck (4).
- Pull the lever (8): the table will rotate till the buck is under the head and the automatic pressing cycle will start.
- Lay another garment on the free buck that is now in the front.
- After the pressing cycle of the first garment has been completed, the lever has to be pulled again be starting the other.
- Depending on the pressing result, the pressing duration can be adjusted (6).
- /103 (electrically heated): Adjust the temperature if necessary (18).

4.4 Put out of operation

- Turn the main switch (9) on 'OFF'.
- /101 (steam): Close the steam valve and blow off steam if necessary.
- Close the shut off valve of the water supply of the spray gun.
- Remove the compressed air line.

Warning! At disconnecting the air line the filtered water will be drained out of the air control (15).

☞ **Catch the water for it might contain oil remains.**

5 Trouble shooting

Mind your safety!

When you cannot resolve the problem with the help of table 1, an expert should be contacted.

Table 1: Trouble shooting

Trouble	Check / solution
Machine doesn't start	<ol style="list-style-type: none"> 1. Is main switch (9) turned 'ON'? 2. Is emergency stop switch (10) unbolted (turn to the right) 3. Has compressed air been connected to the air control (15) and set at 6 bar? 4. Is table (5) in starting position? (buck (4) straight under head (1) and reset-switch pressed in). 5. Check the electrical connection. <p>Serviceman: Check the safety bar, the working of the sensor 18, 48 or 49 and switch 46 (see Addition A) and check the electrical and air circuit.</p>
Pressing quality is insufficient For example: <ul style="list-style-type: none"> - pressing duration too short; - smooth spots; - wet spots on pad and covering 	<ol style="list-style-type: none"> 1. Increase the pressing duration on timer (6) if covering gets too wet/ decrease pressing duration if smooth spots occur. 2. /101 (steam): Increase steam pressure (9 bar maximum!) 3. /103 (electric): Increase temperature (18) 4. Increase compressed air pressure (6 bar maximum!). <p>Serviceman: Check the pad and covering (replace in case of damage or insufficient resilience), check steam quality (/101).</p>
Head damping is too low	<p>Serviceman: Check oil-check (12) on leakages (replace if necessary) or adjust damping (see §6.4.1 'Adjustments').</p>
Head damping is too high	<p>Serviceman: Adjust damping oil-check assembly (12) according to §6.4.1 'Adjustments'.</p>
Safety bar is not working properly	<p>Serviceman: Check if microswitch (13) of the safety bar is blocked or defective.</p>
Press (protective cover+ head) opens too slowly	<p>Serviceman: Check the working of the exhaust valve and sound dampers. If dampers are blocked up, replace them.</p>

6 Maintenance, repairs and adjustments

6.1 Maintenance

- ☞ **Mind your safety! Always turn off the machine (9), close the steam shut off valves (W) and open the blow off cock (Y) (see figure 4) and remove the compressed air line from the air control (15), before starting the maintenance activities.**

Warning!: The air filter drains automatically after the machine is turned pressureless.

- ☞ **Catch the water for it might contain oil remains.**

- **Air filter (15)**

The air filter (15), which is incorporated in the reducing valve, cleans and dries the air supplied from the main line.

Maintenance:

- ☐ Check at regular intervals whether dirt or condense have accumulated in the clear plastic bowl.

Clean as follows:

- ☐ Unscrew the plastic bowl.
- ☐ Empty the bowl and clean with petrol or turpentine (never use acids or detergents);
- ☐ Screw the bowl back on the valve.

- **Covering**

Advice: Wash the coverings of the buck every month.

- ☐ Remove the springs under the bucks and loosen the string.
- ☐ Remove the coverings of the bucks.
- ☐ Wash the coverings.
- ☐ Place the clean coverings on the pressing shoes and tie the string.

6.2 Repairs

- ☞ **Before starting the disassembly, close the steam valves (W) and open the blow off cock (Y) (see figure 4), remove the compressed air line and switch the machine off (19).**

In order to be able to execute the repairs, the panels of the framework can be removed.

- ☞ **All repair activities need to be carried out by an expert!**

If parts have become defective after use, spare parts can be ordered with your distributor (see table 2 'spare parts' §6.4 and addition A).

Only use original PANTEX parts!

When the activities have been completed, the panels have to be put back before taking the ROULETTE into use again.

6.3 Adjustments

☞ Turn the main switch (9) on 'OFF' before starting with the adjustments.

6.3.1 Damping table (5)

If the table bangs when stopping into its end position after rotating, or when the table doesn't rotate properly so the buck doesn't get straight under the head, then the damping of the oil-check (12) needs readjusting.

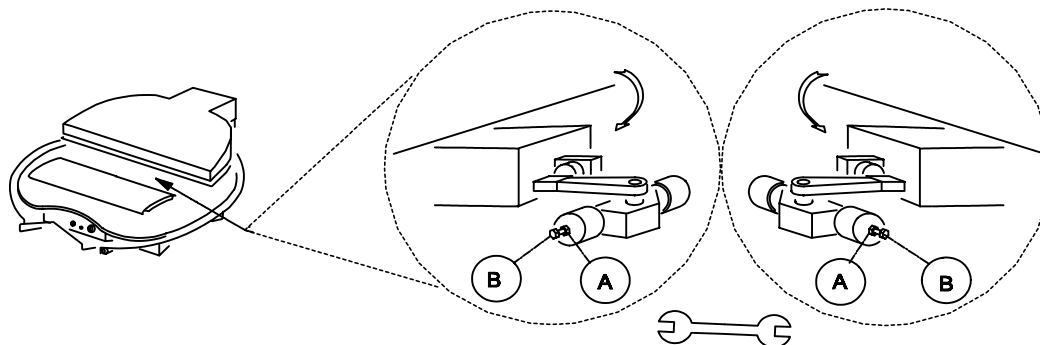


Illustration 9: adjustment damping

Adjustment instruction:

1. Unscrew nut (A);
2. Adjust the damping by turning the bolt (B):
 - clockwise : more damping
 - anti-clockwise : less damping
3. Tighten the nut (A);
4. Turn 'ON' the main switch (9);
5. Table (5) into starting position (= buck straight under head).
6. Press the reset-switch (7).
7. Pull out the lever (8) to start the automatic cycle;
8. Check the damping of the table (5).

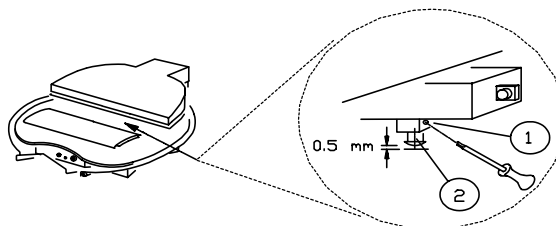
Repeat all 8 actions, after turning off the machine again, if the damping still is insufficient.

6.3.2 Adjustment depth stop

The depth stop has to be adjusted properly, so the machine will know if the table is its right starting position.

Adjustment instructions:

1. Turn main switch (9) on 'OFF'.
2. Unscrew socket screw (1);
3. Adjust the depth to 0,5 mm by turning the set bolt (2);
4. Fasten the socket screw (1);
5. Turn main switch (9) 'ON' and check if the press if working properly.



6.4 Spare parts

Order spare parts with your distributor.

Only use original PANTEX parts!

Tabel 2: Reserve onderdelen

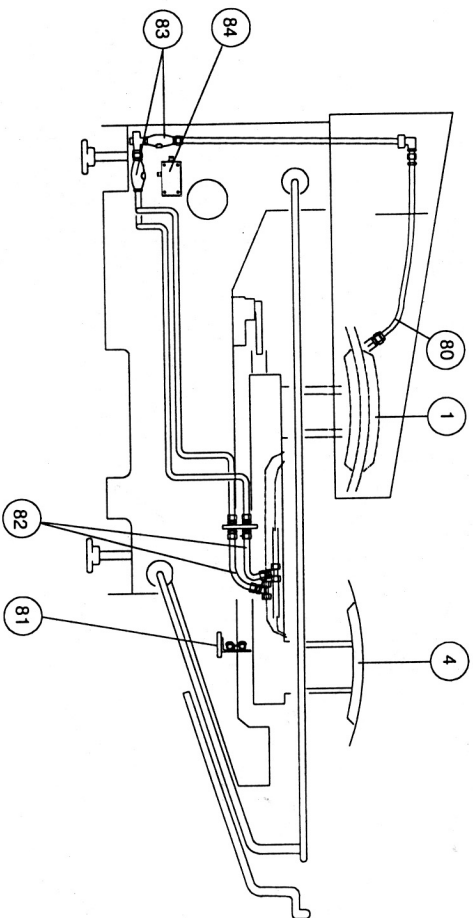
Nr.	Parts	Art.nr.
1	Upper pressing shoe	modellnr.
2	Safety bar	96910
3		
4	Lower pressing shoe	modellnr.
5	Table	96903
6	Potentiometer	70834
7	Micro switch	70001
8	Handle assy	119115
9	Main switch /101 /103	70775 70830
10	Stop button	117100
11	Guard house assy	119122
12	Hydraulic check	115033
13		
14	Height adjustment	81007
15	Air control	118591
16		
17	Spray gun	113980
18	Temperature controller Sensor	70839 70840
19	Tube	96881
20	Support rod + tube	96890
21		
22		
23	Corner joint assy	119121
24	Tube	96880
25	Rod	96875
26	Support assy	119113
27	Micro switch	70001
28	Hose clip (d=28mm)	
29	Spring	55065
30	Sensor	119128

Nr.	Parts	Art.nr.
31	Rubber bumper	30872
32	Bellow *	PAN212/1119127
33	Exhaust valve	113471
34	Muffler	25050
35	Fork+pin	96917
36	Cylinder unit	119125
37	Exhaust valve	110025
38	Check valve	117106
39	Repair kit	119158
40	Muffler	25050
41	3/2 Air valve	118542
42	Back bearer	96916
43	Cylinder unit	119126
44	Repair kit	119158
45	Exhaust valve	110025
46	Muffler	25050
47	Cylinder head	96918
48	Decorative plate	96904
49	Back bearer	96916
50	Cylinder unit	119124
51	3/2 Air valve	118542
52	Air flow valve	80846
53	Solenoid valve 1/8	118544
54	Fork+pin	96915
55	Spring	55063
56	Lever rod	96928
57	Spacer	96809
58	Pin	96862
59	Micro switch	70001
60	Gauge	80961

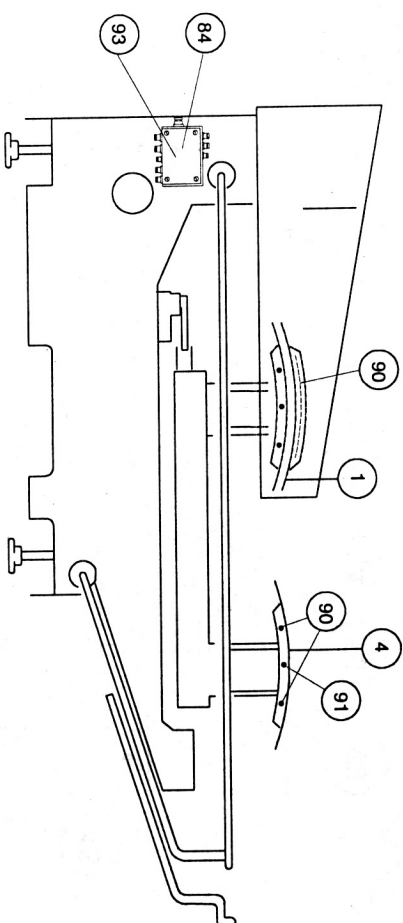
* 1119127 has 4 bolt pattern, PAN127 has 2 bolt pattern

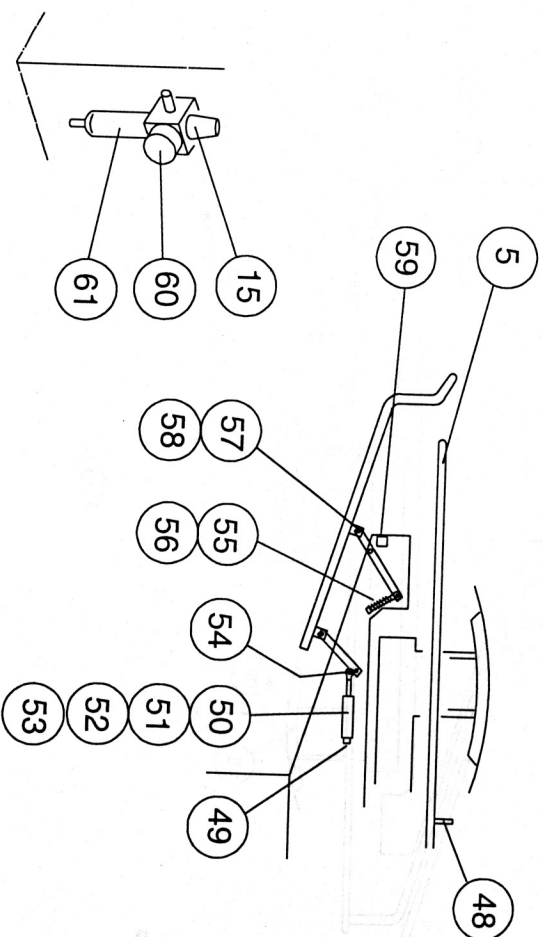
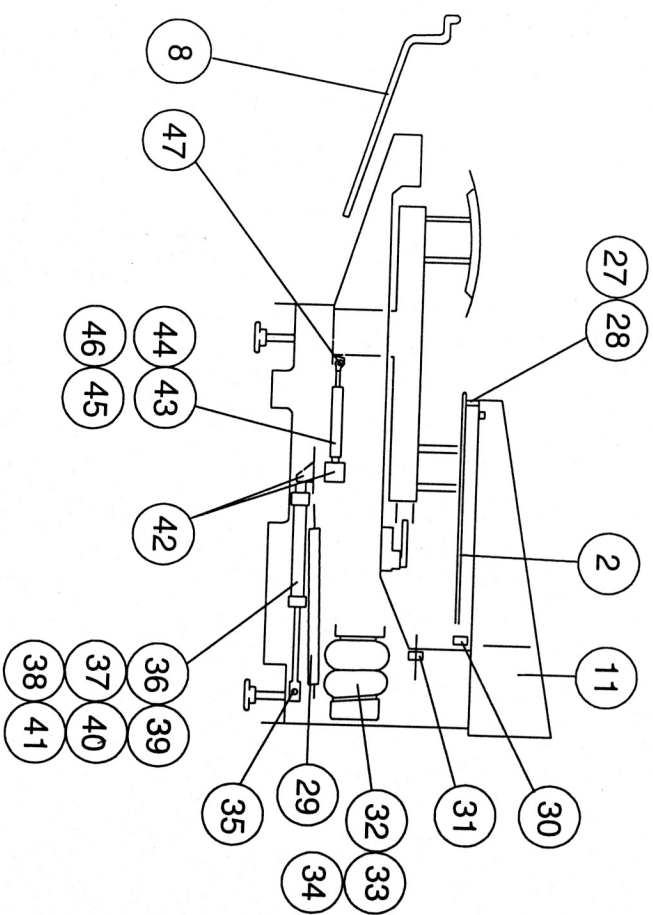
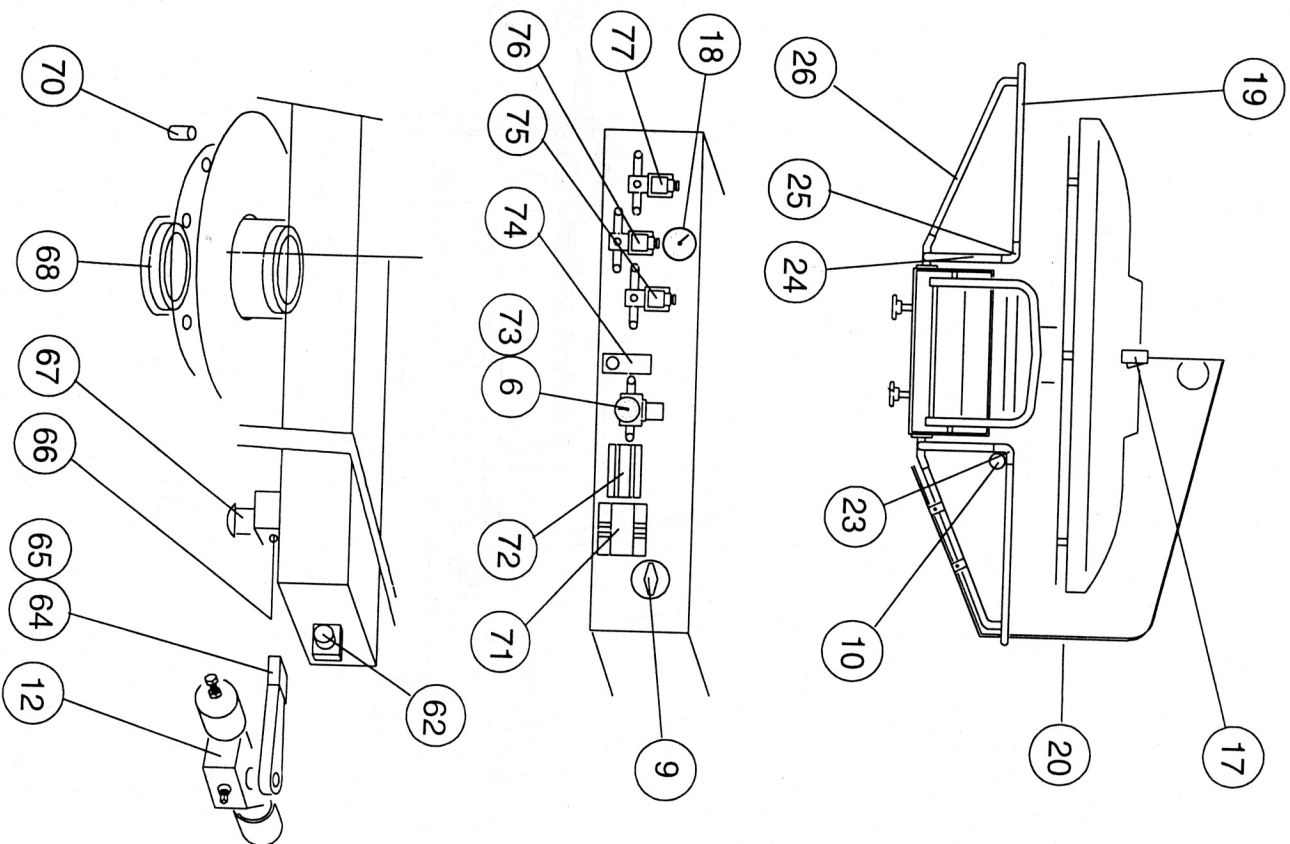
Nr.	Parts	Art.nr.	Nr.	Parts	Art.nr.
61	Bowl	118635	81	Slicer	96883
62	Ruber bumper	30887	82	Steam hose	81012
63			83	Check valve	80021
64	Roller	96814	84	Connecting box (/101)	30200
65	Shaft	96812	84	Connecting box (/103)	
66	Pressure piece	96900			
67	Pressure piece	96887	87	Fuse (2,5 A)	70623
68	Ball bearing	81004	88		
69	Sensor	119128	89		
70	Sensor	119128		Only /103:	
71	Transformer	70811	90	Heating element	modellnr.
72	PLC	70812	91	Heating element	modellnr.
73	Pressure regulator	118552	92	Heating element	modellnr.
74	Solenoid valve	118544	93	Magnet switch	70843
75	Solenoid valve Option 24V 50Hz	117786 119524			
76	Solenoid valve Option 24V 50Hz	117786 119524		Covering	modellnr.
77	Solenoid valve Option 24V 50Hz	117786 119524			
78					
79					
80	Steam hose (/101)	80507			

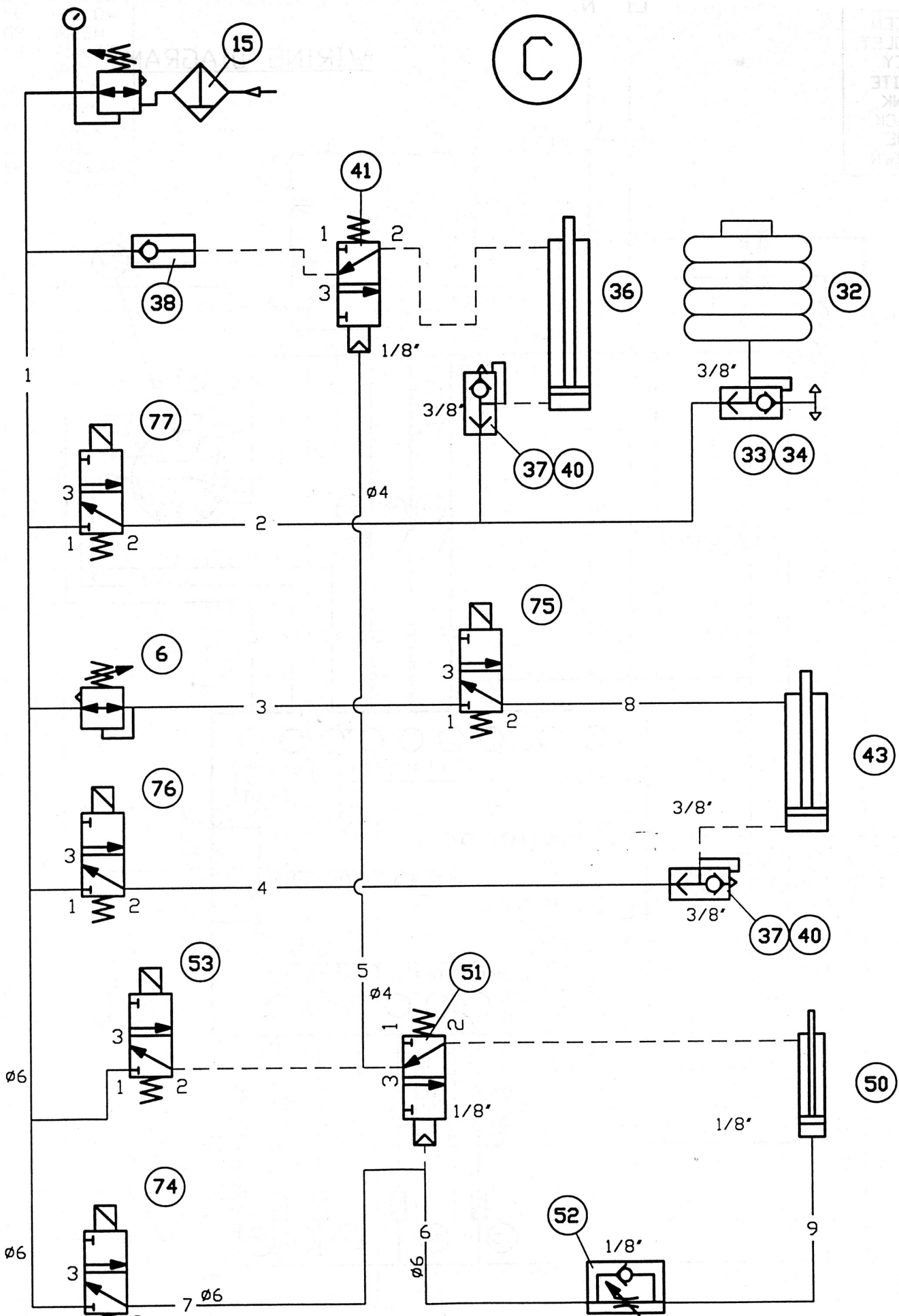
/101

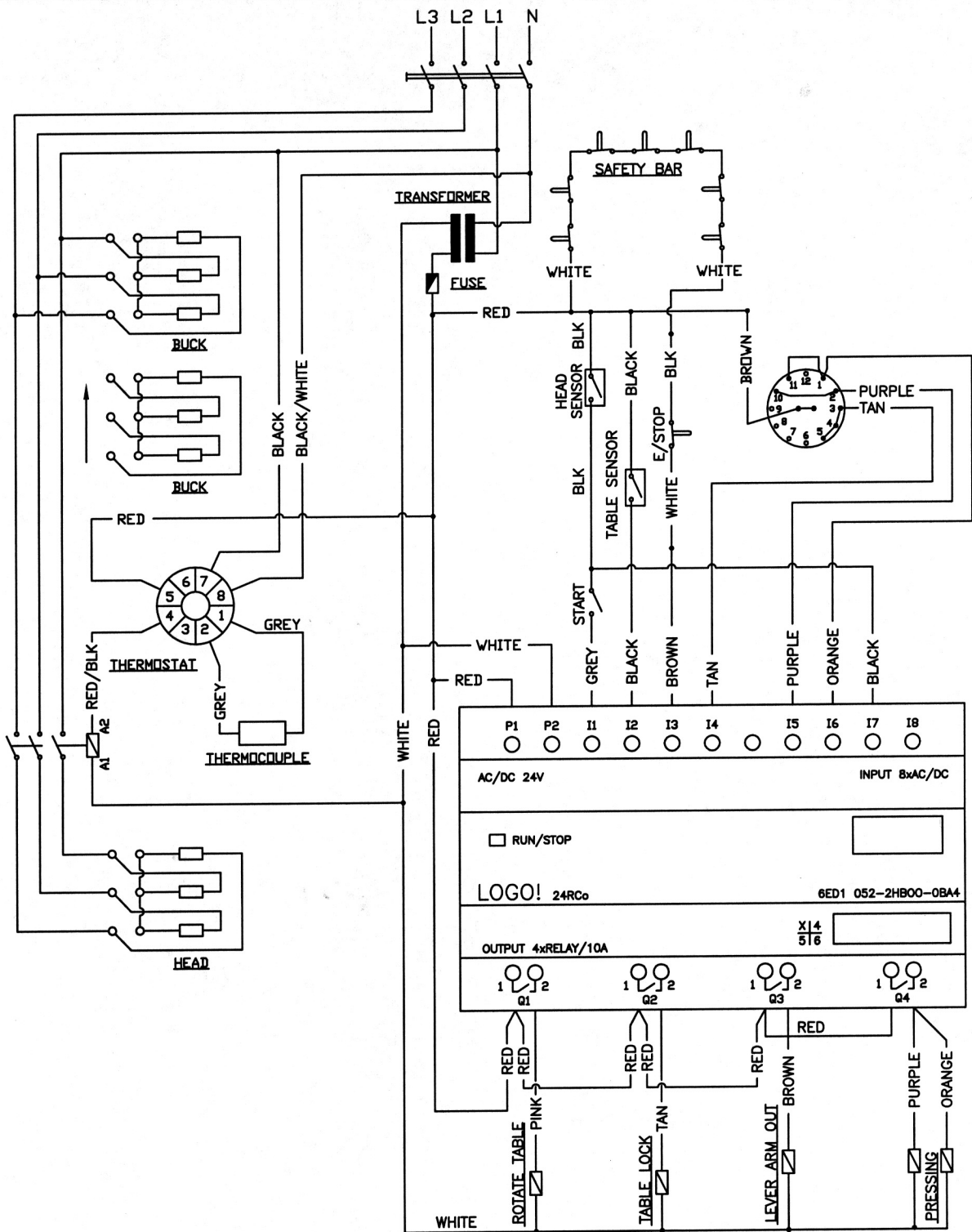


/103

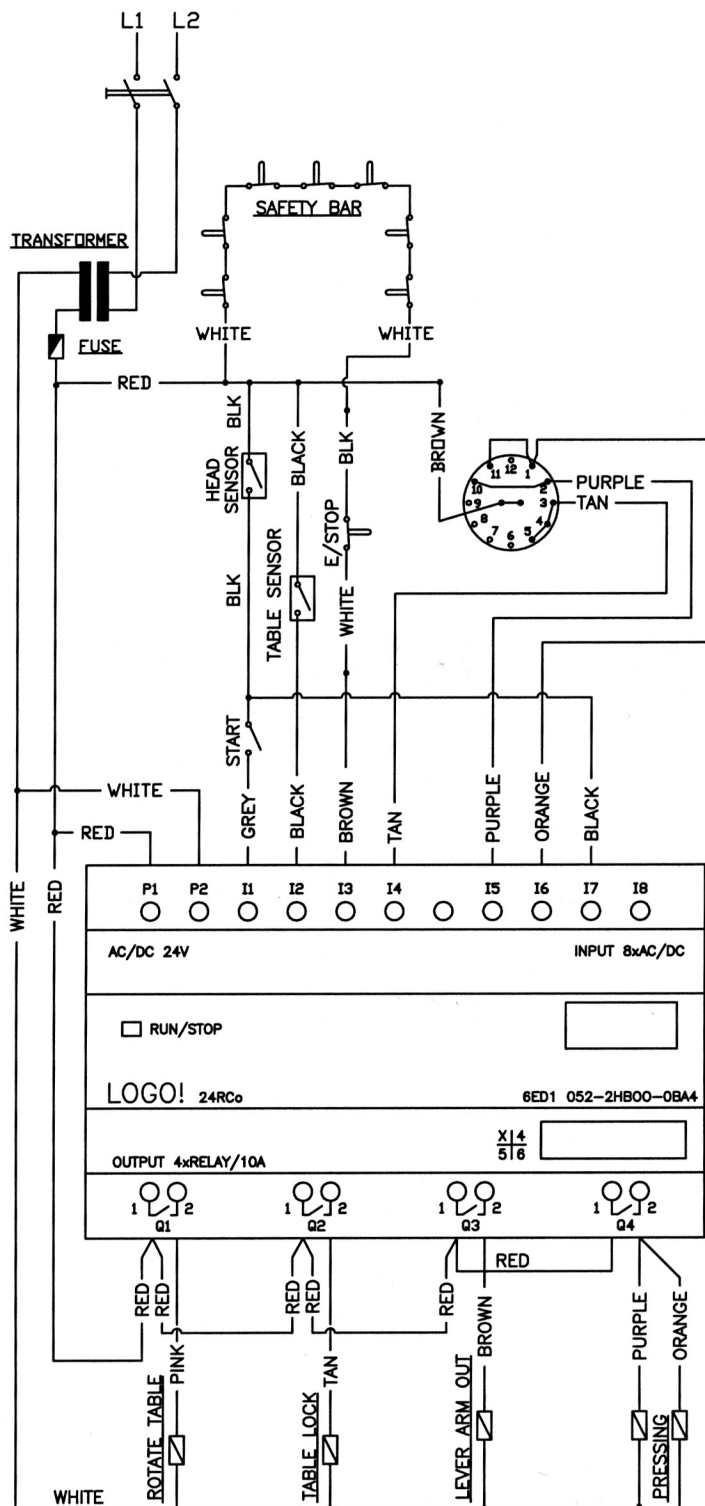








REVISIONS REVISED 2/05	±1/64" ON FRACTIONS ±.005" ON DECIMALS UNLESS OTHERWISE NOTED	TITLE: SCHEMATIC, ROULETTE ELEC 380-415V	
	SCALE: NONE	FIRST USED ON	PRODUCT NO:
	MATERIAL:	MODEL NO:	
	FINISH:	BLANK SIZE:	
DR. BY TPS	DATE 11/10/04	CK. BY	DATE
CISSELL MANUFACTURING CO. 831 S. FIRST * LOUISVILLE, KY. 40203			PART NO.: PANS100



REVISIONS

±1/64" ON FRACTIONS
±.005" ON DECIMALS
UNLESS OTHERWISE NOTED

TITLE:

SCHEM., ROULETTE, STM 120-240V, 1PH

SCALE: NONE

FIRST USED ON

PRODUCT NO:

MATERIAL:

MODEL NO:

FINISH:

BLANK SIZE:

DR. BY STW

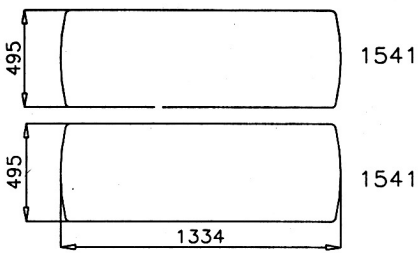
DATE 2/14/05

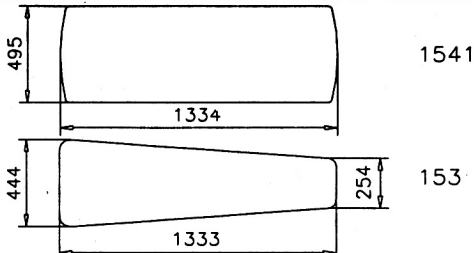
CK. BY

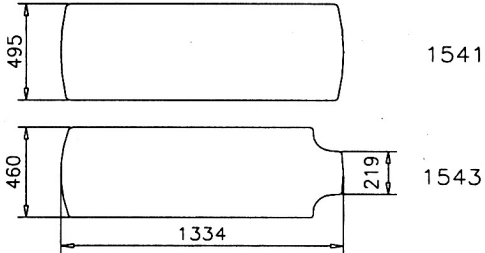
DATE

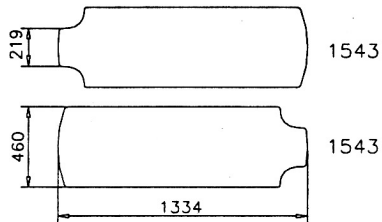
CISSELL MANUFACTURING CO.
831 S. FIRST * LOUISVILLE, KY. 40203

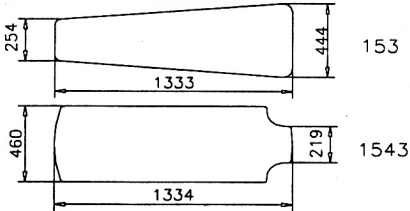
PART NO.: PANS101

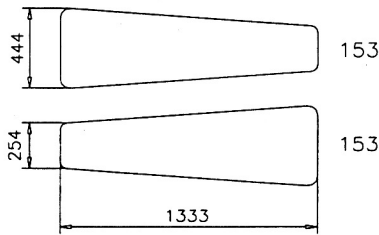
			
2500/101			
Press Shoe Group:	122501		
Head:	102357		
Buck:	114285	2x	
Buck covering:	116929	2x	
Spring pad	60330	2x	
2500/103			
Press Shoe Group:	122513		
Head:	102378		
Buck:	102062	2x	
Buck covering:	117535	2x	
Spring pad	60330	2x	

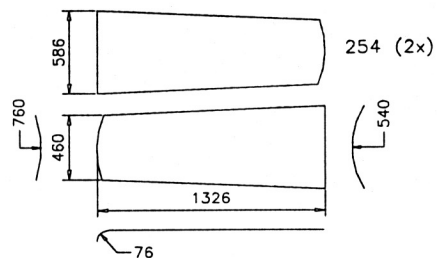
			
2501/101	(153)	(1541)	
Press Shoe Group:	122502	122502	
Head:	102357	102357	
Buck:	114987	114285	
Buck covering:	116917	116929	
Spring pad	60323	60330	
2501/103	(153)	(1541)	
Press Shoe Group:	122514	122514	
Head:	102378	102378	
Buck:	102380	102062	
Buck covering:	116969	117535	
Spring pad	60323	60330	

			
2502/101	(1543)	(1541)	
Press Shoe Group:	122503	122503	
Head:	102357	102357	
Buck:	102358	114285	
Buck covering:	116930	116929	
Spring pad	60331	60330	
2502/103	(1543)	(1541)	
Press Shoe Group:	122515	122515	
Head:	102378	102378	
Buck:	102379	102062	
Buck covering:	117709	117535	
Spring pad	60331	60330	

			
2503/101			
Press Shoe Group:	112504		
Head:	102357		
Buck:	102358	2x	
Buck covering:	116930	2x	
Spring pad	60331	2x	
2503/103			
Press Shoe Group:	122516		
Head:	102378		
Buck:	102379	2x	
Buck covering:	117709	2x	
Spring pad	60331	2x	

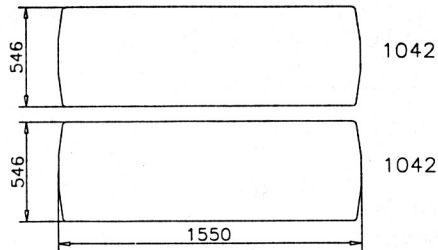
			
2504/101	(1543)	(153)	
Press Shoe Group:	122505	122505	
Head:	102357	102357	
Buck:	102358	114987	
Buck covering:	116930	116917	
Spring pad	60331	60323	
2504/103	(1543)	(153)	
Press Shoe Group:	122517	122517	
Head:	102378	102378	
Buck:	102379	102380	
Covering:	117709	116969	
Spring pad	60331	60323	

			
2505/101			
Press Shoe Group:	122506		
Head:	102357		
Buck:	114987	2x	
Buck covering:	116917	2x	
Spring pad	60323		
2505/103			
Press Shoe Group	122518		
Head:	102378		
Buck:	102380	2x	
Buck covering:	116969	2x	
Spring pad	60323		



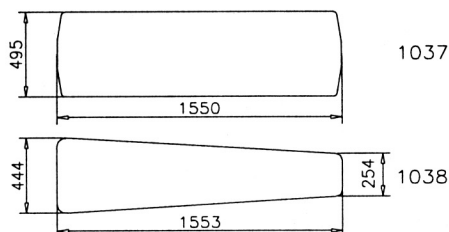
2506/101

Press Shoe Group:	122524
Head:	102394
Buck:	114507
Buck covering:	116920
Spring pad	60138



2510/101

Press Shoe Group:	122512
Head:	102361
Buck:	102317
Buck covering:	118808
Spring pad	60138

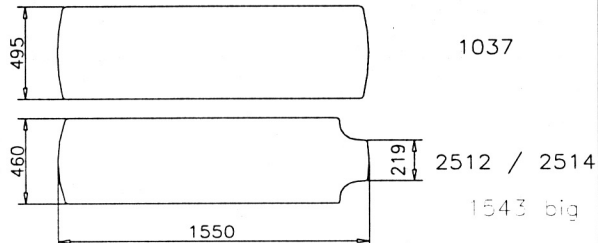


2511/101

	(1038)	(1037)
Press Shoe Group:	122507	122507
Head:	102359	102359
Buck:	102325	102206
Buck covering:	118567	119008
Spring pad	66492	66415

2511/103

	(1038)	(1037)
Press Shoe Group:	122519	122519
Head:	102378	102378
Buck:	102385	102327
Covering:	119196	119197
Spring pad	66492	66415

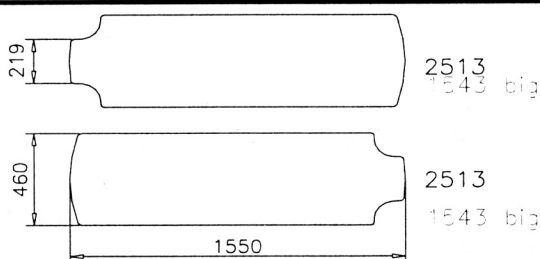


2512/101

	(2512)	(1037)
Press Shoe Group:	122508	122508
Head:	102359	102359
Buck:	102360	102206
Buck covering:	118568	118567
Spring pad	66416	66415

2512/103

	(2512)	(1037)
Press Shoe Group:	122520	122520
Head:	102387	102387
Buck:	102383	102327
Buck covering:	119195	119197
Spring pad	66416	66415

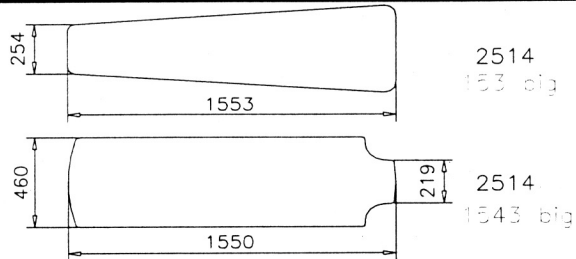


2513/101

Press Shoe Group:	122509	
Head:	102359	
Buck:	102360	2x
Buck covering:	118568	2x
Spring pad	66416	2x

2513/103

Press Shoe Group:	122521	
Head:	102387	
Buck:	102383	2x
Buck covering:	119195	2x
Spring pad	66416	2x



2514/101

	(2514)	(1038)
Press Shoe Group:	122510	122510
Head:	102359	102359
Buck:	102360	102325
Buck covering:	118568	119008
Spring pad	66416	66421

2514/103

	(2514)	(1038)
Press Shoe Group:	122522	122522
Head:	102387	102387
Buck:	102385	102383
Buck covering:	119195	119196
Spring pad	66416	66421

WARRANTY

The Cissell Manufacturing Company (Cissell) warrants all new equipment (and the original parts thereof) to be free from defects in material or workmanship for a period of one (1) year from the date of sale thereof to an original purchaser for use, except as hereinafter provided. With respect to non-durable parts normally requiring replacement in less than one (1) year due to normal wear and tear, including, but not limited to, cloth goods, valve discs, hoses, and iron cords, and with respect to all new repair or replacement parts for Cissell equipment for which the one (1) year warranty period has expired, or for all new repair or replacement parts for equipment other than Cissell equipment, the warranty period is limited to ninety (90) days from date of sale. The warranty period on each new replacement part furnished by Cissell in fulfillment of the warranty on new equipment or parts shall be for the unexpired portion of the original warranty period on the part replaced.

With respect to electric motors, coin meters and other accessories furnished with the new equipment, but not manufactured by Cissell, the warranty is limited to that provided by the respective manufacturer.

Cissell's total liability arising out of the manufacture and sale of new equipment and parts, whether under the warranty or caused by Cissell's negligence or otherwise, shall be limited to Cissell repairing or replacing, at its option, any defective equipment or part returned f.o.b. Cissell's factory, transportation prepaid, within the applicable warranty period and found by Cissell to have been defective, and in no event shall Cissell be liable for damages of any kind, whether for any injury to persons or property or for any special or consequential damages. The liability of Cissell does not include furnishing (or paying for) any labor such as that required to service, remove or install; to diagnose troubles; to adjust, remove or replace defective equipment or a part; nor does it include any responsibility for transportation expense which is involved therein.

The warranty of Cissell is contingent upon installation and use of its equipment under normal operating conditions. The warranty is void on equipment or parts; that have been subjected to misuse, accident, or negligent damage; operated under loads, pressures, speeds, electrical connections, plumbing, or conditions other than those specified by Cissell; operated or repaired with other than genuine Cissell replacement parts; damaged by fire, flood, vandalism, or such other causes beyond the control of Cissell; altered or repaired in any way that effects the reliability or detracts from its performance, or; which have had the identification plate, or serial number, altered, defaced, or removed.

No defective equipment or part may be returned to Cissell for repair or replacement without prior written authorization from Cissell. Charges for unauthorized repairs will not be accepted or paid by Cissell.

CISSELL MAKES NO OTHER EXPRESS OR IMPLIED WARRANTY, STATUTORY OR OTHERWISE, CONCERNING THE EQUIPMENT OR PARTS INCLUDING, WITHOUT LIMITATION, A WARRANTY OF FITNESS FOR A PARTICULAR PURPOSE, OR A WARRANTY OF MERCHANTABILITY. THE WARRANTIES GIVEN ABOVE ARE EXPRESSLY IN LIEU OF ALL OTHER WARRANTIES, EXPRESS OR IMPLIED. CISSELL NEITHER ASSUMES, NOR AUTHORIZES ANY PERSON TO ASSUME FOR IT, ANY OTHER WARRANTY OR LIABILITY IN CONNECTION WITH THE MANUFACTURE, USE OR SALE OF ITS EQUIPMENT OR PARTS.

For warranty service, contact the Distributor from whom the Cissell equipment or part was purchased. If the Distributor cannot be reached, contact Cissell.